

Water in a new dimension : Revitalized and restructured



GIE® Water Activation Technology

Base information on Water
Technology
Amortisation
Technical Specifications
Scientific Studies
Summary

Interesting Base Information about Water :

Water is the source of life : Water is fundamental for all functions of all kinds of life on our planet earth. Its quality is of crucial importance for the preservation and recovery of our health.

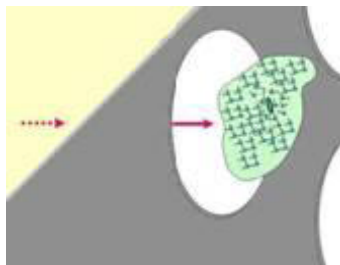


Water possesses a memory : Water stores each contact with millions of substances, which it finds on its journey through the earth in its net like, molecular structure. Over the past centuries man used, loaded and contaminated the water of our earth with cadmium, lead, mercury oestrogens, dioxins, pesticides, solvents, acids, chemical fertilizers, phosphates, plasticizers, radioactive substances, etc. Today, we are trying to remove these impurities at the cost of large technical investments in purification plants. This rough material way of working and thinking has, however, no prospect to advance in the fine-material, molecular range and to delete the pollutant information long-term.

Filtration has its technical limits : With Filtration we can eliminate to certain extend the rough material part in the water. This has however technical limits:

A water cluster (approx. 700 water molecules with stored pollutants) in usual tap water has a size of max. 5 nanometres. Thus they are significantly smaller than the pore size of a state of art reverse osmosis membrane (15 nanometres). Consequence: Filtering cannot get to these pollutants. These large water clusters must be broken open in other way: There are two solutions remaining :

- Heating of the water on 400°C (very complex) or:
- **Extreme turbulence** (used in the here presented technology)



Water is like an antenna : It was a German physicist Dr. Wolfgang Ludwig that discovered that information stored in water transfers itself to living organisms. The water molecule possesses the ability of an antenna with a dipole structure. Therefore, it is able to receive and send frequencies. This applies equally to our body fluids. Its life energy depends directly on favourable, life-promoting frequencies of the water, which we drink daily, since the frequencies of this drinking water will transfer to all the cells in our body.

Water, the big cleaner: Water cannot fulfil its cleaning role any longer if it is loaded or dead like that tap water, which was treated chemically (e.g. with chlorine). At present most tap water is no longer able to clean the body of harmful substances, which enrich themselves increasingly in our food chain.

Mineral water is no alternative without risk: Mineral water has an excessive content of inorganic minerals. They represent for numerous persons an element of risk as they can cause significant kidney dysfunction. Moreover, compared with de-mineralised water, mineral water can have a very low (electrical) resistance and, therefore, convert the body water into a strong electrolyte, which causes veritable short-circuits in the organism. The spinal column, normally electronegative (-), becomes anodic (+). On the other hand the original electropositive (+) becomes electronegative (-). As a consequence calcium moves out of the spinal column to the Aorta, which causes increased **calcification (arteriosclerosis)** on both sides of the Aorta and **Osteoporoses** on both sides of the spinal column.

The GIE® Water Activation Technology provides the answer:

This on very high level perfected technology understanding, copying and multiplying intact nature provides a water in a yet not known quality:

Thesis: Due to **extreme turbulence**, all destructive **proper frequencies** are **deleted** - as well of the **water** itself as of the **contaminants** existing in the water (therefore these matters lose their characteristic as contaminants and become to neutral matter – ready to receive new frequencies !)

Afterwards a most **stable imprinting** of the **energizing frequencies** (principle of function 10 & 11, details see p.5) takes place both into the **neutralised water** itself as well as into the **former** harming **contaminants**. These are made thereby to carriers of the new frequencies like the water!
Finally results a water in a clearly increased biophysical value.

Water, which has passed **GIE® Water Activator**, differs clearly from usual tap water:
Among others, the following effects are to be emphasized:

Test person described the **Water** from the **GIE® Activator** in numerous blind tests as significantly better tasting. Further attributes assigned by these test persons:

- o „ The water is softer. “
- o „ The water is very light. “
- o „ My thirst feels satisfied. “
- o „ The water passes my throat soft as oil. “
- o „ After drinking the activated Waters a 2nd energy wave is following. “
- o etc.

GIE® Water stimulates the dismantling effects of poisonous deposits in the organism.

Hence, there are substantial improvements in the state of well-being. In particular, regarding the intestine and arterial system as well as the metabolic and immune system

At the same time the body begins to produce a surplus of red blood corpuscles (carriers of oxygen in the blood). This involves an average increase of the oxygen content in the blood of around 20% after a period of approximately two months. These are values that usually only sports men and women can attain after months of intensive training. The consequence: a significant increase in improved vitality*.

The **GDV Technology** represents a quantum jump regarding the effect proof of **GIE® Water** on living organisms:

For the effect verification of **GIE® Water** on living organisms, the GDV method represents in this context a quantum jump:

For the first time, short-, mid- and long-term effects of **GIE® Water** on the bio energy field can be measured and illustrated comprehensively on living organisms. A first study (**Result: Increase of Body Energy of test persons: more than 25%**) is already available for well 2 years.

„The gas Discharge Visualisation“ Technology (GDV), which is based on the Kirlian photography, is able to measure and biophysically analyze the radiated energy field of human beings (see picture above) or organic and inorganic materials.

GIE® - Tap water in a new dimension

After intensive research and development the **GIE® Water Activation Device** was brought 1996 on to the market. The technology used by him changes the molecular structure of conventional tap water in such a manner that the water returns to its original, life-promoting condition for humans, animals and plants. After intensive observation and understanding the irrefutable laws of nature take place in a unique application combining 15 interlinking and logically supplementing principles.

As important result of research over years, the **GIE® Water Activation Technology** was awarded in **April 2007** with the **Gold Medal** at the **Inventors Exhibition in Geneva** :

Water in high quality plays a more and more important role – therefore the areas of application are nearly boundless:



Note:

This award of Gold Medal for **GIE® Water Activation Technology** could only be realised thanks to the extraordinary financial & personal commitment of Proceeding GmbH.

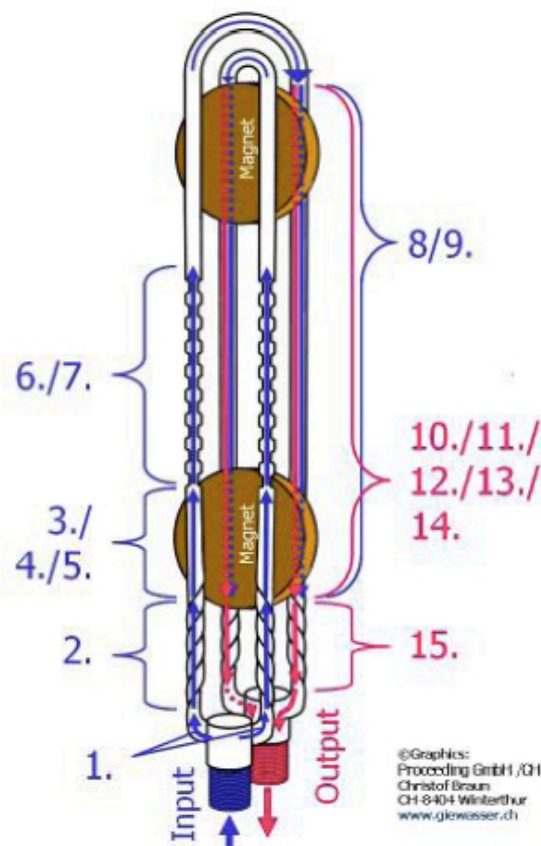
Water in high quality plays a more and more important role – therefore the areas of application are nearly boundless:

- Private and rented accommodation
- Single family houses
- Office buildings
- Swimming pools
- Hotels / WELLNESS
- Restaurants
- Bakeries
- Breweries
- Medical practices
- Veterinary practices
- Gardening shops / Cultivation of medicinal plants
- The cultivation/breeding of fish
- Farms
- Car washing installations
- Industrial companies

The 15 Principles of Function of the GIE® Water Activation Technology

Tap water passes through the **GIE® Water-Activator** in 500 milliseconds. The technology works under normal water pressure without the need for electricity. The appliance was designed for an operating working time of a water conduit installation (≈ 50 years) and needs neither filters, spare parts, decalcification nor any other maintenance.

The principles of function are explained in the following. They activate themselves as soon as a water pressure of approximately 4 bar or more flows through the activator by simply opening a water tap:



1. Subdividing the water flow into 2 ropes after entering the activator.
2. *Turbulation* the water caused by rotation in tube windings. (System Viktor Schaubberger)
3. / 9. *Turbulation* caused by magnetically achieved *northern* resp. *southern* oriented polarity of the water molecules with a sudden change of spin-orientation. (System due to Dr. Patrick Flanagan).
4. Permanent-magnetic caused Ionisation of the water.
5. Permanent-magnetic caused alteration of the water's lime-structure=> softer water, better for the skin and less consumption of detergent (washing powder).
6. *Turbulation* caused by 17-fold pressure/suction subsequence in a thousands intervals.
7. 17-fold high/low-pressure subsequence in a thousand intervals causes increased Oxygen concentration, which deactivates the major part of low organized bacteria. (System Aqua-Ligro).
8. *Turbulation* caused by building strong electro-magnetic fields with different field-vectors. As the water flows the floating ions make these fields penetrate the ropes and the space in between them. Therefore no electric current is needed.
10. *Transmission* of the information of numerous *natural materialistic frequencies*.
11. *Transmission* of the information of numerous *natural immaterialistic frequencies* as there are red sky, sunset glow, midday sunlight, full moon light, Schumann-frequency of the earth's pulsation, planet's frequencies and other natural frequencies.
12. High grade *shielding* against the effects of *electro-smog*.
13. Massively increased integration of oxygen in GIE Water.
14. 5-fold *organ-charging* by layer-system. (System Wilhelm Reich)
15. *2nd Turbulation* of the water caused by rotation in tube windings. (System Viktor Schaubberger)

Practical examples of installation of the GIE® Water Activator

General

Where possible, we recommend the central installation of the GIE® Water Activator directly after the water meter. This way you get the maximum availability of GIE® Water at all taps.

Furthermore we recommend also for base model « GIE 3000 » the installation of a so-called « By-pass ». This way you can keep your GIE® Water Activator mobile and take it for instance to your holidays. On the other hand you can maintain your water supply in your house.

If this possibility is not available, one installs the GIE® Water Activator simply in the bathroom, where besides having showers and baths, drinking water is provided.

The connections of the GIE® Water Activator must always be directed downwards around condensation effects to prevent.

Installation examples

Entrance ("In") and exit ("Out") of the GIE® Water Activators are clearly marked and must be respected, since the function of the appliance depends crucially on correctly attaching the inflow and outflow. The connections have a 1-inch diameter. The pieces of reduction included in the scope of supply permit the connection of normal shower hoses. The activator can be used with both hot and cold water.



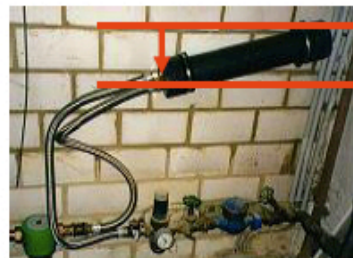
Simple installation in the shower or bathroom.



The activator installed underneath the water tap with connections facing **downwards**.



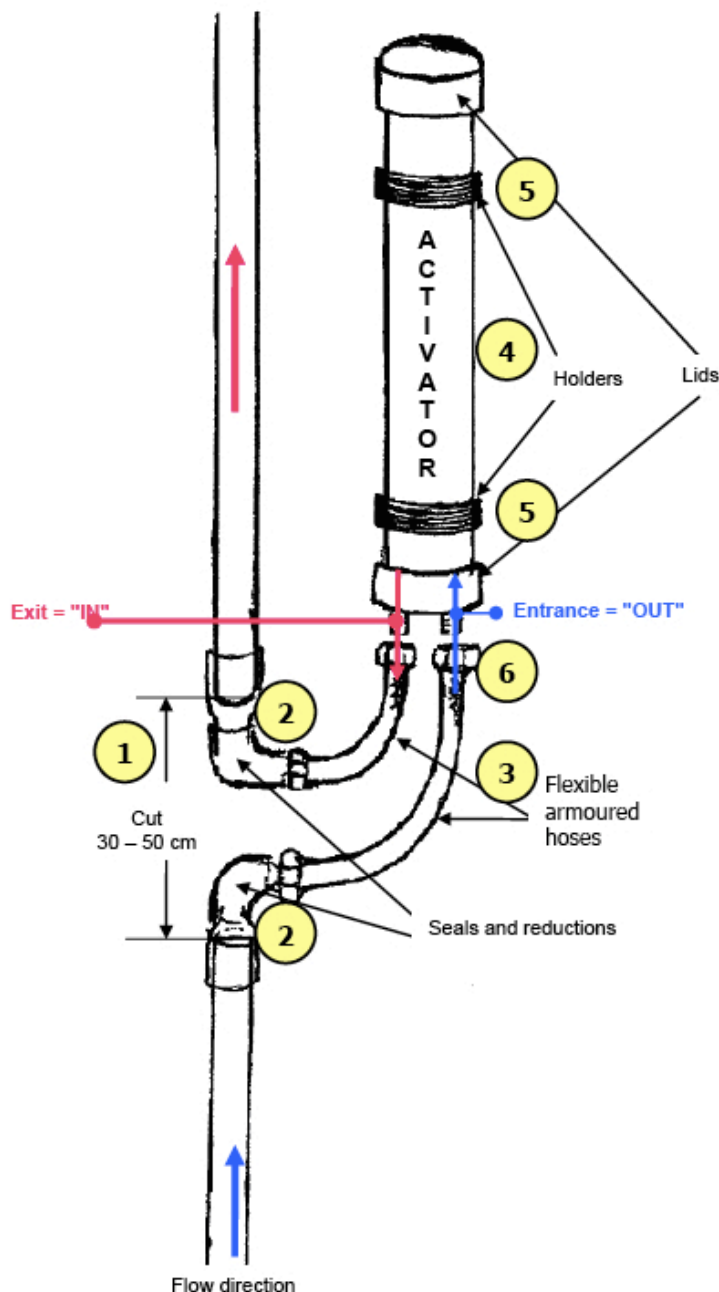
Installation after the water meter.



The installation placed diagonally and the connections must always point **downwards**.

GIE ® WATER ACTIVATOR

Installation in the water conduit



1. Cut out a piece of 30 to 50 cm length from the water conduit *after the water meter*.
2. Connection of the seals and if necessary the reductions at the water conduit.
3. Connection of the flexible armored hoses at the entrance and exit of the activator as well as at both ends of the cut water conduit. The nuts and bolts do not need to be tightened. Pay attention to the correct connection of **entrance ("IN")** and **exit ("OUT")**! The connections must always (at least diagonally) face *downwards*.
4. Now fix the holders at the wall (they are supposed to take on the activator).
5. Fix the activator into the holders without exerting pressure on the covers above and below the activator.
6. After the activator has been fixed, tighten the nuts and bolts of the armored hoses carefully (to avoid the risk of damage), holding on to the lock nut with a spanner.

Important Note:

The following rules are to be respected, since neglecting them can crucially impair the function of the appliance:

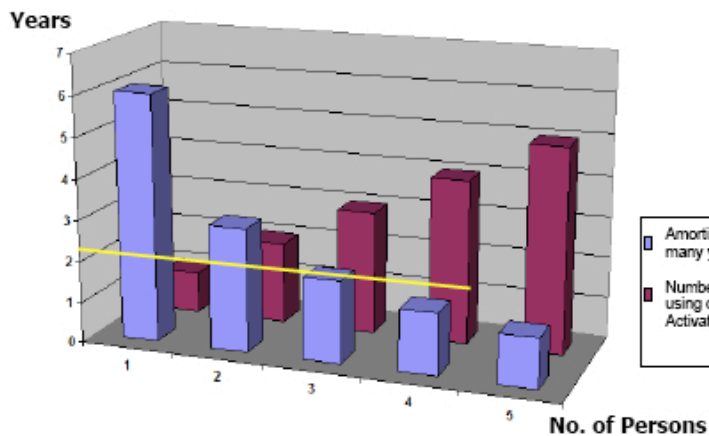
- Minimum distance of at least **50 cm** to **wires carrying the current**.
- Minimum distance of at least **150 cm** to the **current junction box**.
- A **metal cover** or a **metal sheath** over the activator is to be **avoided!**

When will your GIE® Water Activator be amortised and what savings potential is there for you?

The GIE® Water Activator does not require any maintenance. As a consequence: no additional costs after its installation (neither for electricity nor for filters, spare parts and de-calcification). Mineral water has become a standard, widely accepted beverage, which is increasingly replacing tap water. The expenses incurred are as shown in the table below. The investment can turn into important savings after starting to use the GIE® Water Activator:

The calculations are based on the fact that human beings should drink approximately **2.5 litres of pure water per day** (the water contained in meals and beverages is not included):

Number of persons using one GIE® Water Activator	1	2	3	4	5
Recommended quantity of water to drink [Litres per day]	2.5	2.5	2.5	2.5	2.5
Required quantity of water [Litres per day]	2.5	5	7.5	10	12.5
Price of bottled water: [EUR/ Liter] (e.g. Volvic 1.5 l = EUR 0.55)	EUR 0.37	EUR 0.37	EUR 0.37	EUR 0.37	EUR 0.37
Expenses per day	EUR 0.92	EUR 1.83	EUR 2.75	EUR 3.67	EUR 4.58
Expenses per month (30 days):	EUR 27.50	EUR 55.00	EUR 82.50	EUR 110.00	EUR 137.50
Expenses per year (12 months):	EUR 330.00	EUR 660.00	EUR 990.00	EUR 1'320.00	EUR 1'650.00
"Amortisation" after how many years?	7.2	3.6	2.4	1.8	1.4
Net saving after 10 years:	EUR 920.00	EUR 4'220.00	EUR 7'520.00	EUR 10'820.00	EUR 14'120.00



According to this calculation the GIE® Water Activator in a household with **3 persons** is **amortised** after:

2,4 years

After **10 years** using one GIE® Water Activator one has made the following savings:

EUR 7520.-

In the above mentioned calculations the following advantages are not included: one obtains an excellent water quality in quasi unlimited quantity for use in the kitchen, shower, bath, garden, laundry (with important savings in detergent usage). Costs and expenditure in time for transport and storage of the purchased bottled water are not incurred.

GIE® Water Activation Technology

Technical Specifications

Model	Application	Litr Water per hour at			Weight [kg]	Length [cm]	Connection Entry-/ Exit [inch]	Body / Cap Ø [cm]	Accessories (optional – as needed)
		4 bar	5 bar	6 bar					
1000	Travelling	855	1069	1283	6	57	½- 1	10 / 11	2 flexible armoured hoses 2 holders
3000	2 - 3 living units	1832	2290	2748	12	77	1- 1¼	11 / 13	2 flexible armoured hoses 2 holders
7000	Buildings and professional applications	7070	8838	10605	36	100	1½ - 2	20 / 23	To be studied on an individual basis
8000	idem	14130	17660	21200	120	140	2	40 / 43	To be studied on an individual basis
9000	idem	29380	36720	44070	160	140	3	40 / 43	To be studied on an individual basis

GIE® Model 3000
with water carrying part



The complete model range of the GIE® Water Activation Devices



All models were tested under a pressure of 40 bar.

The models GIE 1000 & GIE 3000 are **approved** by the **official Swiss Control Agency "Société Suisse de l'Industrie du Gas et des Eaux" (SSIGE) : Nr. 0207 – 4519.**

According to the producer, all water carrying parts of the GIE® Water Activation Devices have an official DVGW-Certification No. and fulfil thereby legal hygiene conditions.

Requirements after the product liability law of the Federal Republic of Germany are covered by a product liability insurance of the manufacturer.

The installing plumber is only responsible for the technically perfect execution of its work (e.g. tightness). A liability beyond this of the installing plumber does not exist.

Attention :

Never cover the GIE® Water Activator with a closed metal box because the added metal strongly reduces the functional ability of the appliance.

The connections of the GIE® Water Activator must always be directed downwards to prevent condensation effects.

Warranty for the whole program of **GIE® Water Activation Devices: 6 years**

Maintenance and Maintenance Charges required for **GIE® Water Activation Devices: NONE**

GIE® Water Activation Technology Scientific Studies and User Reports:

All specified Scientific Studies and User Reports can be found Under on the website :
to be downloaded as PDF documents.
Please find below an extract of results:

1. Increase of Oxygen Content:

a. User Report: « Increase **Oxygen Content** with **GIE® Water** »:

Result: Increase up to plus **42 %**

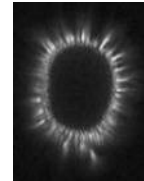
(User Report: Oxygen Content _Client_ 13.10.1998 (in German only))

b. Scientific Study: « **Partial integration of oxygen in GIE® Water** »:

Result:

« The **GIE® Oxygen Water** showed a **capacity of partial linking in of oxygen in water**. This has never been previously measured. The difference towards other oxygen waters is highly significant and reproducible at any time. »

(Scientific Study: Partial integration of oxygen in water_2001.09.28)



2. Increase of Body Energy:

a. Scientific Study: « **GIE® Water** examined with the **GDV method** »:

Result:

Average Increase of Body Energy: plus **27,45%**

(Scientific Study: GDV Study_GIE Water_2006.05.19)

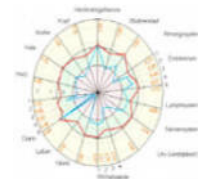
b. Scientific Study: « **Scientific Study Dr. K.Korotkov GDV-GIE Report 2007.06** »

- **2 x 25 test persons** have been drinking 10 litres/week of – either non-treated water (Control Group) or **GIE® Water** (Experimental Group) over a test period of 3 months. Altogether, more than **1800** individual fingertip **EPC corona images** were captured, interpreted by means of computer-aided image analysis and analyzed in detail using bio-statistics.

Results:

- **GIE® Water** has **very high level of energy activity** compared with the control water which is possibly in correlation with the constitution of very small (Micro) Clusters of **GIE® Water**

- **GIE® Water** has a statistically **significant** and during the study **increasing influence** on the level of the Body Energy of the 25 members of experimental group.



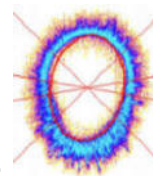
3. Reduction of the heavy metal load in the human body:

a. Scientific Study: « **Flushing out of 25 heavy metals** in urine by **GIE® Water** »:

Result:

Reduction of the **heavy metal load** in the **human body** detected in urine after 2 litres/day of **GIE® Water** during about 1 year: from 100% to **47%** of normalised load.

(Scientific Study: Flush. out of 25 heavy metals in urine by GIE-water _2000.04.30)



4. Beauty & Wellness:

a. User Report: « **Effects** on the **human skin** with **GIE® Water**»:

Result:

- The skin was immediately gentle, less dry and important zones like e.g. face skin, back, torso and legs are hydrated and require only a minimum of crème.
- Taking full bathes, smaller and bigger bubbles are appearing at the major part of the water covered skin. Similar bubbles appearing as well at the water covered surface of bath tub.

(User Report: Skin Effects_e_2008.06.15)

The **GIE®** Water Technology: Summary

Water possesses a memory; it stores each contact with millions of substances such as: cadmium, lead, mercury oestrogens, dioxin, pesticides, solvents, acids, chemical fertilizers, phosphates, plasticizers, radioactive substances, etc!

Rough material pollutants can be removed from drinking water using vapour distillation, reverse osmosis, activated charcoal micro-filtering, etc. .

The fine pollutants, stored in water clusters, however can't be caught due to a too large size of pores. Furthermore, the innumerable pollutant frequencies (= effects in the homeopathic sense) remain stored in the molecular structure (memory of the water) water treated this way.

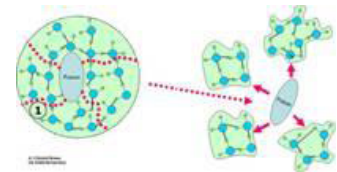
It is not the remaining rough material pollutants in the water which are damaging to us but their unfavourable frequencies.

THEREFORE, WATER FILTERING CAN'T BE THE SOLUTION.

These big water molecule clusters must be broken up in different way:
There are remaining two possibilities:

1. Heating up the water to 400°C (very demanding) or:
2. **Extreme Turbulation**, which is applied in the **GIE® Water Activation Technology** in 9 Principles of Function.

After this turbulence phase most stable imprinting of the energizing frequencies takes place both on the neutralized water and on the former contaminants. These are made thereby like the water itself to carriers of the new frequencies!



Result is water with once again significantly increased biophysical value.

The use of GIE® water results in the following positive experiences:

• **Human beings:**

- Drinking GIE® Water: 2 – 3 litres a day

- ➔ Once again significant increased biophysical energy.
- ➔ Reduction to zero for the expense of bottled water.
- ➔ Reduction of poisons in the body.
- ➔ A general increase in vitality.

- Taking full baths in GIE® Water: 2 – 3 times a week

- ➔ Beauty: a softer skin which is much better hydrated.
- ➔ Increased vitality in general.

- Cooking with GIE® Water:

- ➔ Shorter time to cook (for example, potatoes).
- ➔ Meals are much tastier.

• **Real estate:**

- ➔ Strong reduction of the destructive effects of limestone in water pipes.
- ➔ A large reduction in maintenance costs (pipes, boilers, washing machines, etc.) and operating costs (less detergent usage).

- **Animals:** Example: a **cow** should drink: 100 litres a day.

Reality (non-activated water): 50 litres a day only.

With activated* water: 100 litres a day again.

- **Plants:** ➔ Clearly better growth and longer life of plants watered with GIE® Water.

• **Professional Applications:**

- Gastronomy / Hotels / WELLNESS - • Industrial applications.

ADBIOSYS propose you durable Water Treatment Solutions

More information :

Web : www.adbiosys.com/filtration

